



ADMINISTRATION FOR
CHILDREN & FAMILIES



**Introducing Early Educator Central:
Pathways to Credentials and Degrees for Infant-Toddler Educators**



Early Educator Central
Pathways to Credentials and Degrees for Infant-Toddler Educators



Early Educator Central

Pathways to Credentials and Degrees for Infant-Toddler Educators



**Introducing Early Educator Central:
Pathways to Credentials and Degrees for Infant-Toddler Educators**



ADMINISTRATION FOR
CHILDREN & FAMILIES

National Context

A valuable new asset in support of critical priorities:

- Training and career pathways under the Child Care and Development Fund (CCDF);
- Essential state and territory professional development planning and implementation to respond to CCDF reauthorization; and
- Professional development in Early Head Start-Child Care Partnerships and other programs.

Early Educator Central

- Leverages existing federally funded coursework from Administration for Children and Families, Department of Defense, and the Centers for Disease Control and Prevention.
- Provides courses that are part of a career pathway that lead towards a credential or degree.
- Jointly administered and funded by the Office of Child Care and the Office of Head Start.

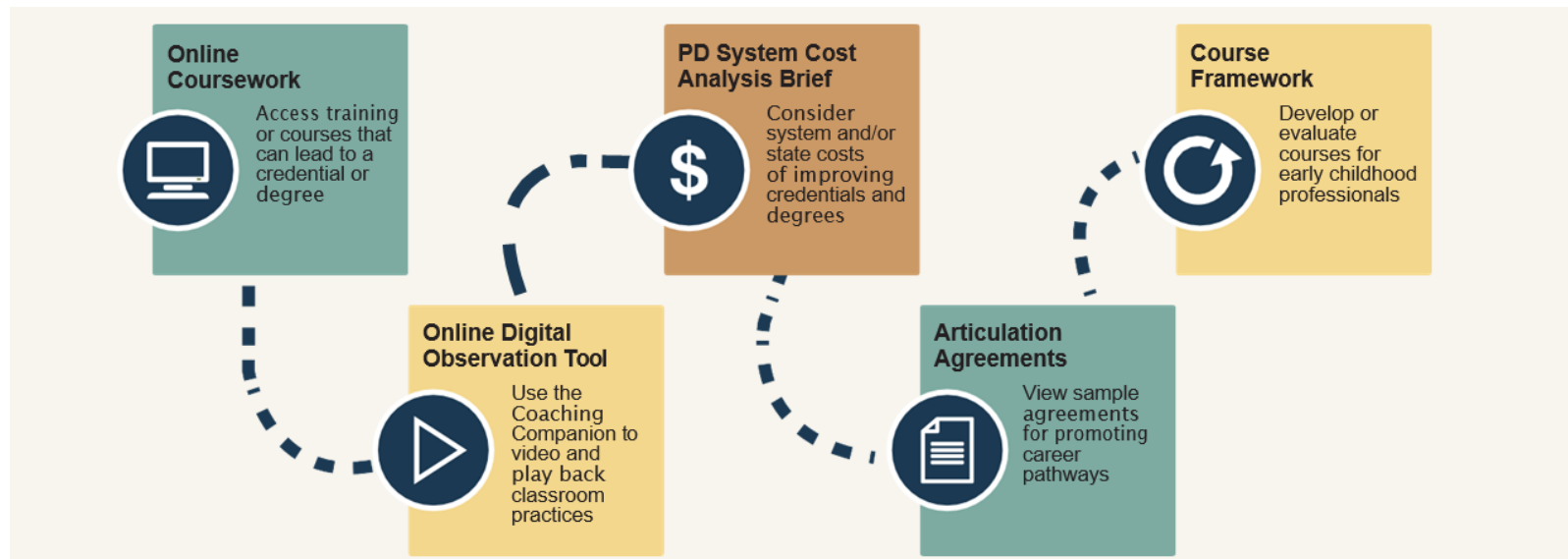
Audiences

Resources and tools that meet the needs of early childhood professionals, including:

			
Teachers	Administrators	Trainers/Coaches	PD System Leaders
All Teachers – Child Care, Early Head Start, EHS-CC Partners, center and home-based	Directors, Education Coordinators, and Instructional Leaders	Trainers, Coaches, Consultants, Specialists, Technical Assistants who support teachers and programs to deliver quality infant-toddler services	Higher Education, Curriculum Designers, Policymakers

Early Educator Central Overview

Tools and resources organized by Career Pathway and Coursework, Teaching Supports and System Supports:



Coursework

Coursework: Details



U.S. Department of Health & Human Services Administration for Children & Families Office of Child Care Office Of Head Start

Early Educator Central

Pathways to Credentials and Degrees for Infant-Toddler Educators

Home Coursework Career Pathways Teaching Supports System Supports Spread the Word

Home > Browse all Coursework

Browse all Coursework

Displaying Coursework 1 - 8 of 8

Family Connections: A Preventive and System-Wide Training Guide and Mental Health Consultation Model
CEUs
Family Connections is a preventive, system-wide mental health consultation and training approach to strengthen the capacity of early learning teachers and administrators. Although these resources...

Better Kid Care
CEUs, Clock Hours
Better Kid Care's On Demand Distance Education system provides asynchronous (24/7) access to online professional development modules. The Better Kid Care CDA Infant Toddler Sample Curriculum...

Watch Me! Celebrating Milestones and Sharing Concerns
CEUs, Clock Hours
As an early care and education provider, you play a critical role in the health and wellbeing of children. You are also very well positioned to help identify children who might need extra help in...

Center for Early Childhood Mental Health Consultation's Best Practice Tutorial Series

Filter Results By:

- Career Pathway
 - PD System Leaders (4)
 - Trainers/Coaches (4)
 - Teachers (3)
 - Administrators (2)
 - Higher Education (1)
- Educational Level >
- Type of Credit >
- Delivery Mode >
- Competency Alignment >
- Audiences >

RESET ALL SELECTIONS

- Allows for browsing of course descriptions, and filtering courses by role and other key indicators- all free or low cost.
- Provides pathway courses for the CDA requirement of EHS & EHS—CC partnerships.



Coursework: Details



Coursework	Course Developer	Intended Audience
Department of Defense Virtual Lab School Infant Toddler Track	The Ohio State University	Infant Toddler Educators Administrators
Better Kid Care	Penn State Extension Better Kid Care Program	All Early Learning Educators Administrators
Online Infant Toddler Associate of Arts (A.A.) curriculum	University of Cincinnati	Infant Toddler Educators Course Developers and Higher Education Professionals PD System Planners
Infant Toddler Consultant Curricula Relationships: The Heart of Development and Learning Infant Toddler Development, Screening, and Assessment Infant Toddler Curriculum and Individualization	ZERO TO THREE	Coaches and Trainers PD System Planners

Coursework: Details



Coursework	Course Developer	Intended Audience
Family Connections: A Preventive and System-Wide Training Guide and Mental Health Consultation Model	Boston Children's Hospital	Administrators Coaches and Trainers PD System Planners
Center for Early Childhood Mental Health Consultation's Best Practice Tutorial Series	Georgetown University	Administrators Coaches and Trainers PD System Planners
Center on the Social and Emotional Foundations for Early Learning (CSEFEL) Infant Toddler Training Modules	Vanderbilt University	Infant Toddler Educators
Watch Me! Celebrating Milestones and Sharing Concerns	Centers for Disease Control and Prevention	Teachers

Teaching Supports

Teaching Supports: Course Framework



- Use the “Know-See-Do-Improve” competency self-assessment course framework if you’re developing a course to support infant-toddler teachers and others.
- The course framework could be used for credit-based as well as non-credit offerings by higher education, trainers, coaches, etc.
- Use the online application process to upload a course you want us to consider for inclusion on the site.

Teaching Supports: The Coaching Companion

- Find an open-source, digital teacher observation tool, The Head Start Coaching Companion.
- The Head Start Coaching Companion provides an opportunity to improve practice through video, which can be shared with administrators, coaches, or higher education faculty.

Teaching Supports: The Head Start Coaching Companion

- Provides a safe place for home visitors and teachers to ask questions and share concerns.
- Enables teams to share videos, photos, and documents in a private, password-protected space.
- Includes Action Planning for teams to set measurable goals and define specific steps to achieve them.
- Features Focused Observation, including goals, notes, and video-based observations.
- Allows teams to annotate videos for Reflection and Feedback.

Teaching Supports: Infant Toddler Video Clips



[Home](#) > [Infant-Toddler Video Clips](#)

Infant-Toddler Video Clips

To assist with the "See" in the "Know-See-Do-Improve" framework, best practice video clips are available. These can be used with existing or new professional development offerings. The video clips embed footage of infants and toddlers demonstrating a range of skills across the developmental continuum as well as caregiver routines and interactions in support of those skills. In addition, the clips were filmed in diverse settings including homes, family child care programs, and child care and Early Head Start centers. These videos can help bring content to life by offering students a chance to observe a diverse array of professionals caring for and educating infants and toddlers. Use these videos to help exemplify the practices your students are learning about.

Search by Keyword(s)

APPLY

RESET

Language and Relationships



This video provides footage of a caregiver interacting with a young infant who is exploring a ball...

Connor's Hair Salon



This video provides footage of a toddler who has set up an imaginary hair salon and is styling his...

Challenging Social Interactions



This video provides footage of young infants and toddlers in play scenarios that challenge their...

Peer Play



This video provides footage of young infants playing in proximity to one another and sharing a...

- View video clips of infants, toddlers and their educators to observe good practice.
- Could be used by educators as part of training and coursework.

Teaching Support: Additional Resources



- Review annotated bibliographies for designers of higher education courses for infant-toddler educators in areas such as:
 - Dual language learners
 - Mathematics
 - Science
 - Poverty, Race and Culture
 - Technology
- Learn more about strategies to successfully include infant-toddler courses and family child care providers in higher education.

System Supports

System Supports: PD System Cost Analysis Brief



Informs planning and development of statewide and/or agency wide professional development with a focus on credit-bearing credentials and degrees.



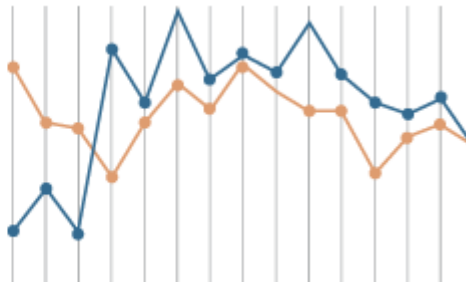
Helps planners understand costs associated with helping early childhood professionals gain degrees and credentials.

System Supports: PD System Cost Analysis Brief



The tool helps planners answer questions like:

- What qualifications does your workforce currently have?
- What qualifications do you need or want it to have?
- What do you need to target to help meet your goals of building and retaining a qualified workforce?



System Supports: Articulation Agreements



U.S. Department of Health & Human Services Administration for Children & Families Office of Child Care Office Of Head Start

Early Educator Central
Pathways to Credentials and Degrees for Infant-Toddler Educators

Home Coursework Career Pathways Teaching Supports System Supports Spread the Word

Home > Articulation Agreements

Articulation Agreements

To support infant-toddler educators in moving along their educational and career pathways, Early Educator Central offers information and resources related to articulation. These resources provide guidance to States, Territories, training agencies, and other professional development system leaders on the components necessary to support credentials and degrees that are stackable (training and coursework counts and progresses a teacher toward a credential) and portable (credentials and degrees that count in one sector or State are transferrable to other sectors and States). Resources related to articulation of non-credit training to college credit, articulation of entry-level credentials to associate degree, and articulation of associate degree credits toward bachelor degree attainment are highlighted here.

To introduce users to different approaches to articulation, and provide essential perspective about choices and strategies for articulation take a look at:

- **Supporting Successful Degree Completion by Early Childhood Professionals**, Alison Lutton, National Association for the Education of Young Children
An article discussing four major features of strong articulation agreements.
- **Getting Started with Articulation: What State Partners Need to Know**, Early Educator Central Staff
An introduction for state partners and leaders to current issues surrounding articulation in support of early childhood degree attainment.
- **Coming Soon** **Negotiation Guidance**, Deborah J. Cassidy, Ph.D., Professor, Human Development & Family Studies, University of North Carolina at Greensboro
Practical guidance and tips about successfully negotiating articulation agreements.

- Background on Articulation.
- Templates to inform work to create Articulation Agreements.
- Sample agreements from around the country.



System Supports: Resources



Find additional resources including:

- A review of options and opportunities for financing high quality infant-toddler programming.
- Learn more about infant-toddler teacher compensation.

Spread the Word!

To help you spread the word, Early Educator Central has materials. You'll find:

- Early Educator Central banners to place on your website. These banners will bring your visitors directly to Early Educator Central's homepage.
- Social Media Messages for use on Facebook, Twitter and other social media.
- Factsheet
- Talking Points
- FAQ's
- PowerPoint